

IQ DOOR/WINDOW QUICK INSTALL GUIDE



STEP 1

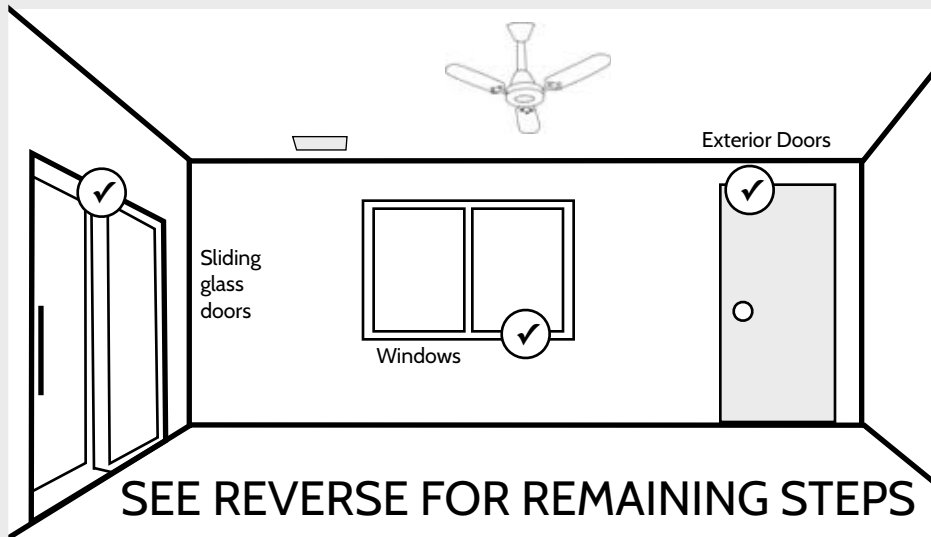
CHOOSE
INSTALLATION
LOCATION

Also great for:

Medicine cabinets
Gun safes

Garage doors
Interior doors

SPECIFICATIONS



Sensor: 3.25" H x 1.3" W x 1" D (8x3x1.5 cm)
Magnet: 1.3" H x 0.435" W x 0.312" D (3.3 x 1.1 x 0.79 cm)

Wireless signal range: 600ft (200M), open air.
Code outputs: tamper, tamper restore, alarm (primary open), alarm restore (primary close), external alarm (secondary wired open), external restore (secondary wired closed), low battery.

Transmitter frequency: 319.5 MHz

Unique code ID

Supervisory keep-alive interval: 70 minutes.

RF Peak field strength: typical 36000 uV/m at 3m

Operating Temperature: -10C-50C

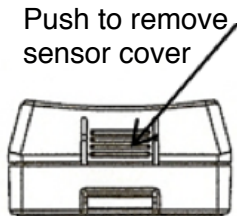
Relative Humidity: 5-95% Non-Condensing

Storage Temperature: -40-80C

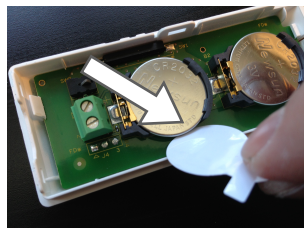
Replace battery with exact replacement every 5 years with 3V CR2032 Lithium (x2).

This is a quick guide for experienced installers only. Refer to <http://dealers.qolsys.com> (login required)

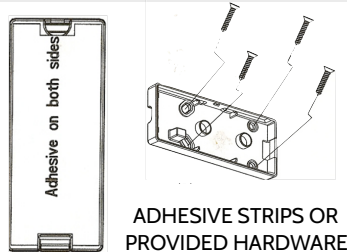
STEP 2 OPEN DEVICE CASING



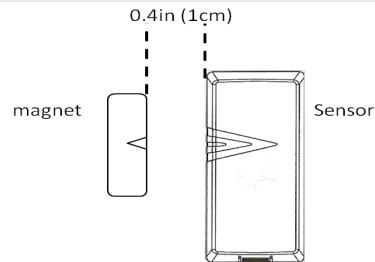
STEP 3 REMOVE BATTERY TABS



STEP 4 CHOOSE MOUNTING TYPE



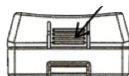
STEP 5 SECURE SENSOR & MAGNET



STEP 6 LEARN INTO PANEL



Place your panel in "autolearn" mode



Open and close the case to "tamper" the device



Customize name and settings as desired and touch "ADD"



ASK **JENNI**
Qolsys

Document#: IQDW-QG-03-17
Revision#: 3/8/17
Issue Date: MAR 2017
Qolsys Product #: QS-1100-PO1

Qolsys Inc. proprietary.
Reproduction without permission is not permitted.
FCC ID: 2AAJXQS1100
IC: 11205A-QS1100

GOT QUESTIONS?
CONTACT TECH SUPPORT
TechSupport@Qolsys.com

This device complies with part 15 of the FCC Rules. Operation is subject to the following two conditions: (1) This device may not cause harmful interference, and (2) this device must accept any interference received, including interference that may cause undesired operation. Changes or modifications not expressly approved by the party responsible for compliance could void the user's authority to operate the equipment.

This device complies with Industry Canada licence-exempt RSS standard(s). Operation is subject to the following two conditions: (1) this device may not cause interference, and (2) this device must accept any interference, including interference that may cause undesired operation of the device.

Cet appareil est conforme avec Industrie Canada exempts de licence standard RSS (s). Son fonctionnement est soumis aux deux conditions suivantes: (1) cet appareil ne doit pas provoquer d'interférences et (2) cet appareil doit accepter toute interférence, y compris celles pouvant causer un mauvais fonctionnement de l'appareil.