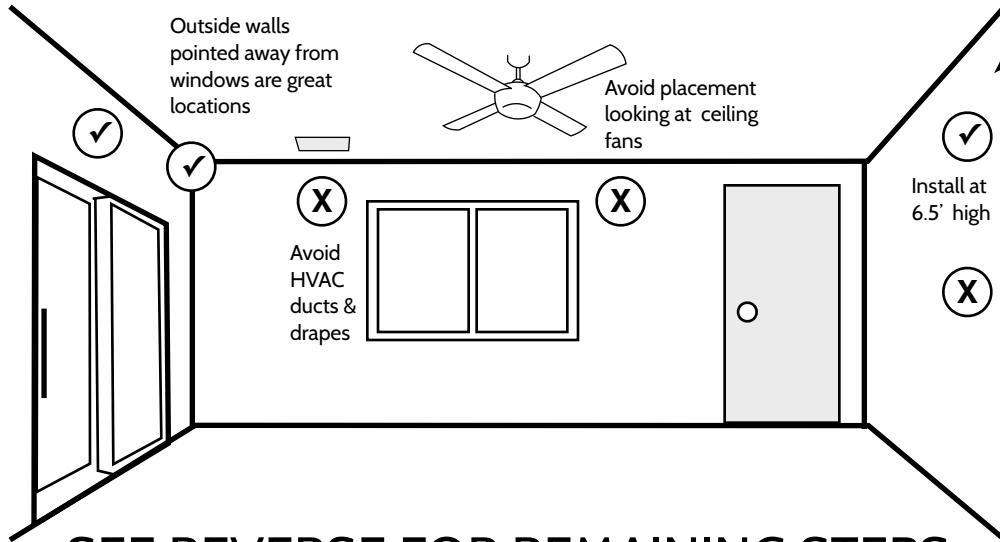


IQ MOTION S-LINE QUICK INSTALL GUIDE

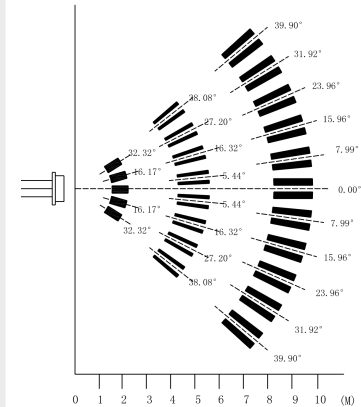


STEP 1 CHOOSE INSTALLATION LOCATION



SEE REVERSE FOR REMAINING STEPS

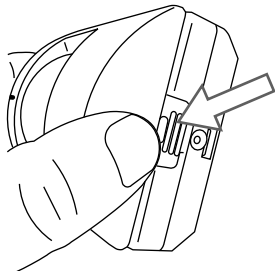
DETECTING AREA (Unit = meter) 40lbs at 35'



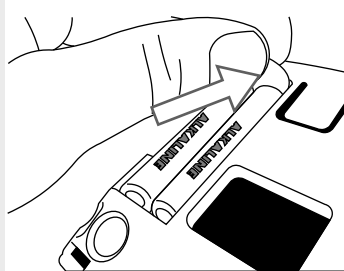
Replace battery every 5 years with AAA Alkaline (x2)

This is a quick guide for experienced installers only. Refer to <http://dealers.qolsys.com> (login required)

STEP 2 OPEN DEVICE CASING



STEP 3 REMOVE BATTERY TABS



STEP 4 CHOOSE MOUNTING TYPE

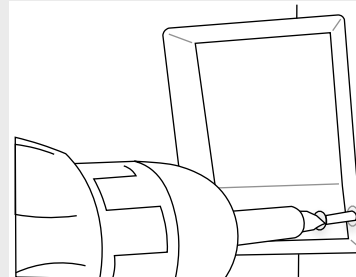
MOUNT AT 6.5 FEET HIGH

ANGLED CORNER

ANGLED FLAT



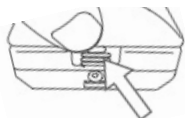
STEP 5 SECURE ALL HARDWARE



STEP 6 LEARN INTO PANEL



Place your panel in "autolearn" mode



Open and close the case to "tamper" the device

ADD

Customize name and settings as desired and touch "ADD"



ASK **JENNI**
Qolsys



Document#: IQM-SQG-03-17
Revision#: 3/22/17
Issue Date: MAR 2017
Qolsys Part #: QS-1230-840

Qolsys Inc. proprietary.
Reproduction without permission is not permitted.
FCC ID: 2AAJXQS1200
IC: 11205A-QS1200

GOT QUESTIONS?
CONTACT TECH SUPPORT
TechSupport@Qolsys.com

This device complies with part 15 of the FCC Rules. Operation is subject to the following two conditions: (1) This device may not cause harmful interference, and (2) this device must accept any interference received, including interference that may cause undesired operation. Changes or modifications not expressly approved by the party responsible for compliance could void the user's authority to operate the equipment.

This device complies with Industry Canada licence-exempt RSS standard(s). Operation is subject to the following two conditions: (1) this device may not cause interference, and (2) this device must accept any interference, including interference that may cause undesired operation of the device.

Cet appareil est conforme avec Industrie Canada exempts de licence standard RSS (s). Son fonctionnement est soumis aux deux conditions suivantes: (1) cet appareil ne doit pas provoquer d'interférences et (2) cet appareil doit accepter toute interférence, y compris celles pouvant causer un mauvais fonctionnement de l'appareil.