

The IQ Card-Zigbee is easily installed in your IQ Panel. This enables support for Zigbee Smart Devices.

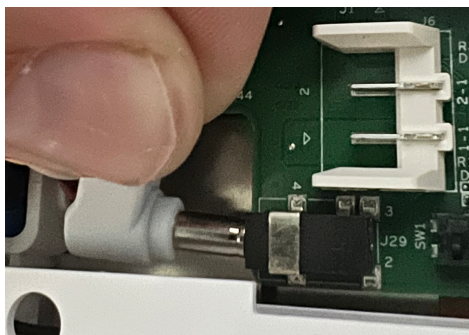
Product Name: IQ Card-Zigbee
 Part Number: QC000E-840
 Document last updated on: 9/21/22

BEFORE YOU BEGIN



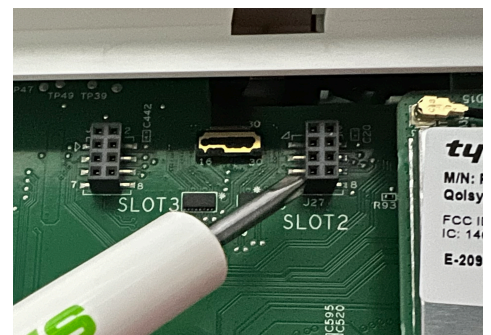
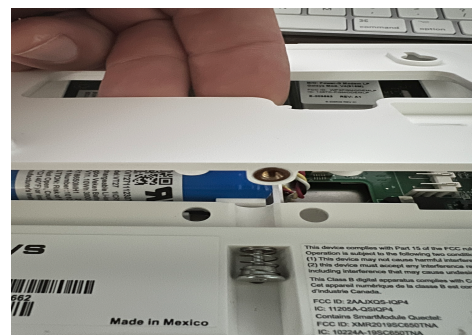
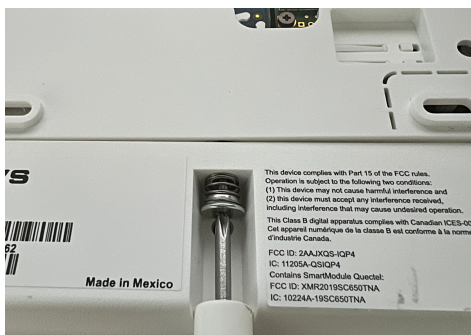
POWER DOWN

Pull down the menu, select settings, then Advanced Settings, enter your code followed by POWER DOWN.



Once the IQ Panel has completely powered down, unplug or disconnect the power by removing the barrel jack connector inside the panel or by unplugging the power supply. *NOTE: it is NOT required to disconnect the battery*

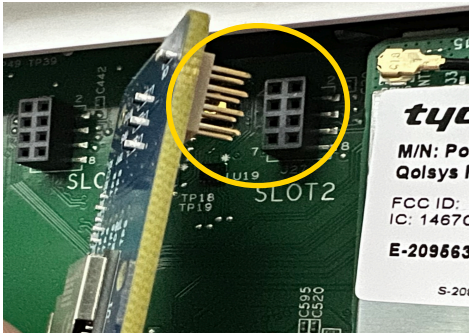
INSTALLING THE CARD



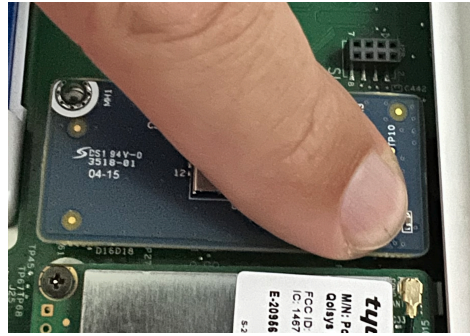
From the bottom of the panel, find the retaining screw. Loosen completely, the screw will not fall out.

Once the screw has been loosened, pull the back plate away from the panel towards the bottom to remove.

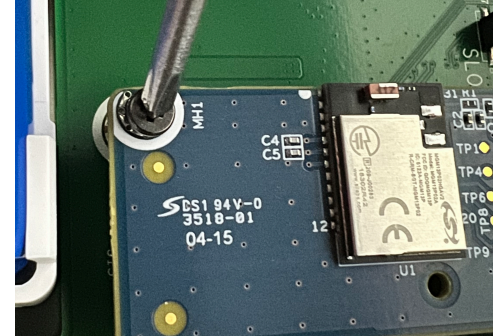
Locate the free card slot to the left of the already installed Power G card (Slot 2).



Match the pins on the bottom of the IQ Card-Zigbee to the terminal on the IQ Panel.



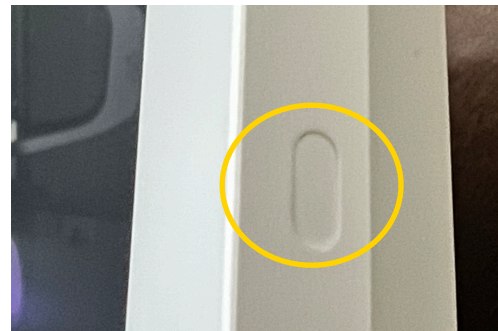
Push the IQ Card-Zigbee into place with your finger over the terminal connection, to avoid seating the card incorrectly or bending any pins.



Install and tighten the provided locking screw to secure the IQ Card-Zigbee into place.

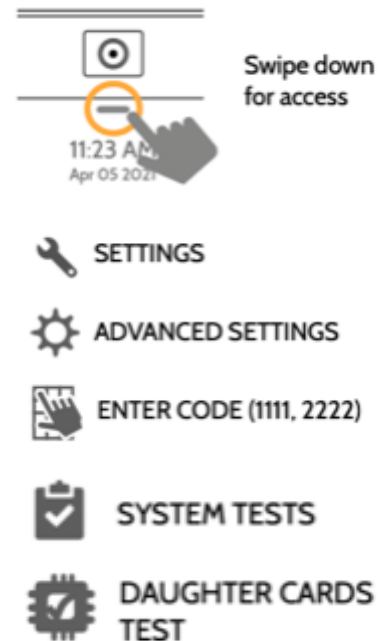
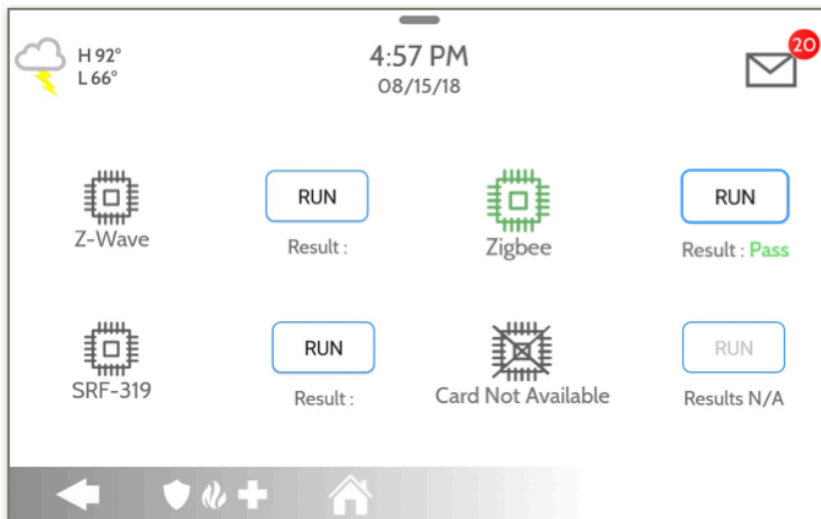


Replace the back cover, top tabs in first. Press down on the bottom and tighten retaining screw.



Plug the power supply back in and press and hold the power button found on the right side, for 3 secs to power on.

TESTING



LEGAL

CE COMPLIANCE STATEMENT

CE DECLARATION OF CONFORMITY

This product is in conformity with the Electromagnetic Compatibility Directive 2014/30/EU, the Low Voltage Directive 2014/35/EU, and the RoHS3 Directive (EU) 2015/863.

The product is labelled with the CE mark as proof of compliance with the above mentioned European Directives. Also, a CE declaration of conformity (DoC) for this product can be found at www.qolsys.com

Simplified EU Declaration of Conformity Hereby, Qolsys Inc. declares that the radio equipment type is in compliance with Directive 2014/53/EU. The full text of the EU declaration of conformity is available at the following internet address: www.qolsys.com

Frequency Bands	Maximum Power
ZIGBEE 2405 - 2430MHz, 2445-2480 MHz	10.5 dBm

European single point of contact: Tyco Safety Products, Voltaweg 20,6101 XK Echt, Netherlands.

UK single point of contact: Tyco Security Products, Unit 1, 3 & 4, Letchworth Industrial Estate, Works Road, Letchworth Garden City, Hertfordshire SG6 1FF

